



BLIBOOL OFFER YOUR PRODUCTS THE BEST PRESENTATION

cglpack

BP 9020
74990 ANNECY CEDEX 9
Tél. +33(0)4 50 27 34 50
Fax. +33(0)4 50 27 34 47
www.cglpack.com

Universal standard displays



Available from stock
departure within 48h

48h

• one clic
www.blibool.com

- Sales promotion
- Self-service displays
- Many customized possibilities
- Applications in all kinds of shops



New

In respect to its environmental policy, CGL Pack decided to introduce recycled material in its Blibool® manufacturing (rPET).



CGL Pack , it is also...



CGL Pack : creating tailor-made packaging solutions - innovative, high-performance and responsible





O U R E X P E R T I S E

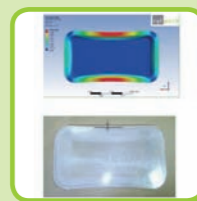
“ A dedicated team for each project ”

> Design & conception

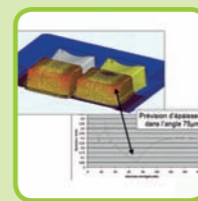
- Creation and layout of eco-designed packaging solutions with innovative features that are in line with market trends.
- Creation of industrial drawings for the technical feasibility of projects.

> Research & développement

- work on eco design



1
Calculating mechanical resistance: optimising thickness



2
Process Simulation: optimising tooling



3
Laboratory controls: compression, falls...

> Extrusion & thermoforming

- Extrusion of PP – PS – APET: mastery of extrusion used in the in-house production of our own raw material
- Integration of recycled materials (rPET)
- Design and production of integrated moulds
- Multi-purpose production tool: small and large production runs
- Workshops fitted with grinders for sorting and recycling scrap

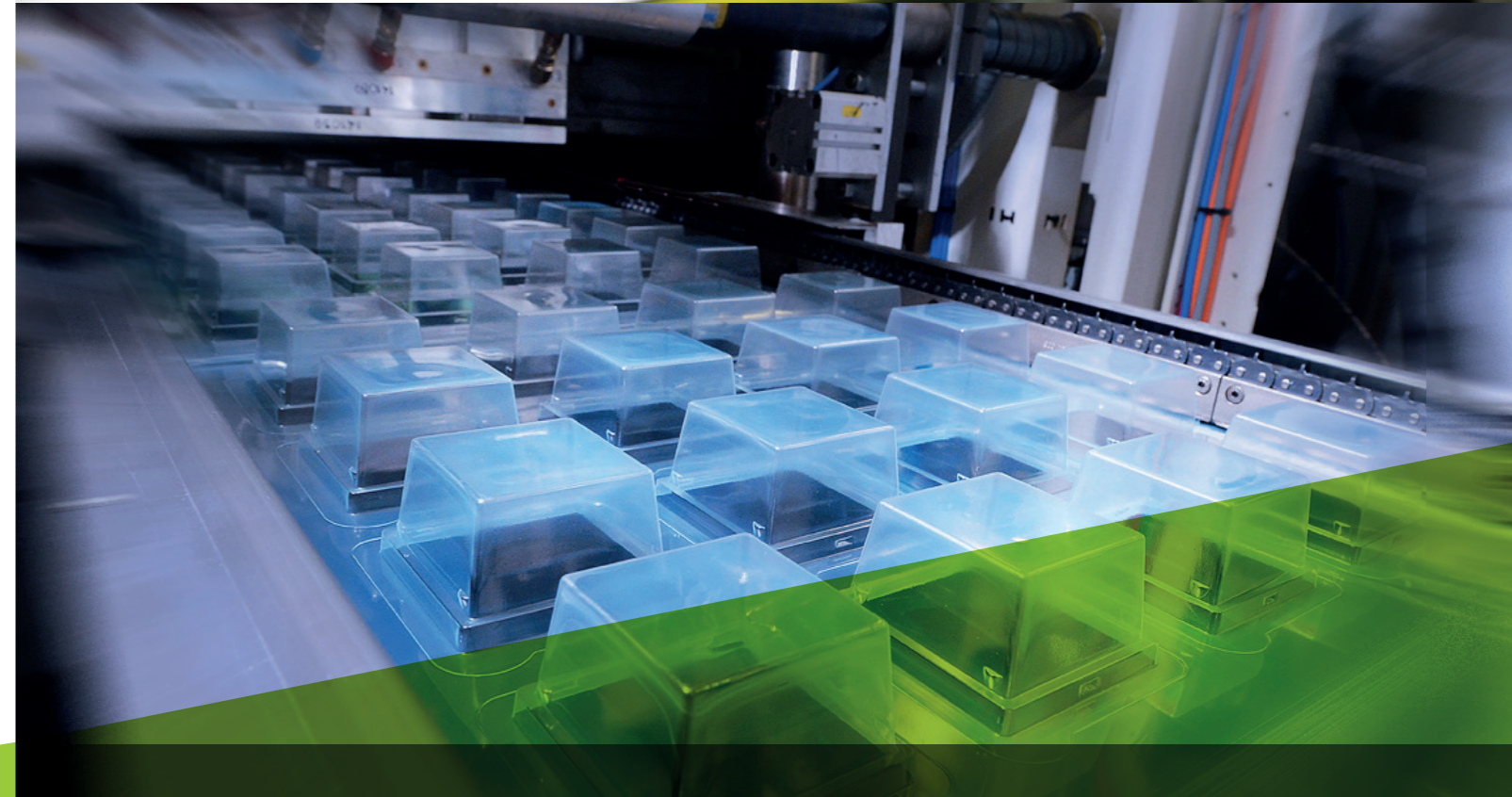
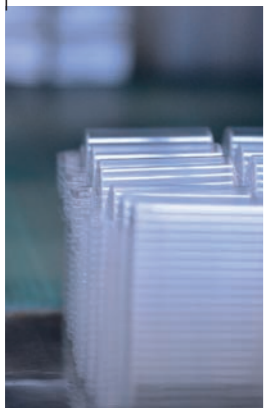


> Our industrial means

- 2 independent industrial sites
- 26 thermoforming lines
- 3 extrusion lines
- 1 clean room

more than **2 MILLION** packaging

items manufactured each day



We add value to your product through its packaging.



“ Who are we ? ”

> Our sites



Lorient

total land area: 25 470 m²
built area: 9 600m²



Anney

total land area: 40 216 m²
built area: 11 000 m²

> Key figures CGL Pack

- 254 employees
- 2012 turnover 50.3 M€
- 2 independent industrial sites
- nearly 12,000 tonnes of material processed per year
- 2 million packaging products manufactured each day



> Part of the Group PSB INDUSTRIES

- 1 402 employees
- PSB turnover in 2012: 248,1 M€

> Certifications :

CGL Pack has 11 persons on its two sites, dedicated to quality control, safety and environment.

Certificates:

- ISO 9001 : management quality standard
 - ISO 14001 : environmental management standard
 - OHSAS 18000 : benchmark for staff health and safety
- CGL Pack is committed to the HACCP procedure which contributes to reinforce its food hygiene and safety procedures

> Development resources

An organisation encouraging reactivity and proximity in each of its two sites:

- **commercial & development department:**
 - 1 designer
 - 8 sales representatives
 - 7 project managers
 - 2 telemarketers
 - 4 project assistants
 - 8 sales assistants
- **Technical development department:**
 - 2 technical development managers
 - 9 research office technicians
 - 4 model makers
 - 9 tool makers

Prototype workshop and rapid 3D modelmaking.
Integrated toolmaking (2 machining centres)

BAIKOWSKI

texen

cgl pack



An organisation encouraging reactivity and proximity in each of its two sites



D E S I G N

“ Design by CGL Pack ”

“ The designer takes peripheral and lateral views, taking account of all the inherent constraints in the packaging and the product, from its manufacture to the end of its life.

It is committed to an eco-design approach. Its creativity enables it to find innovative and always relevant packaging solutions when dealing with technical responses from the packaging manufacturers ”



Thibaut DELARUE
Designer



How does design work?

- Understanding the product, the brand ...
- Creating coherence between the content and the container.
- Paying attention to the details which make all the difference ...
- catching consumer's eyes and creating a desire to buy

> The services provided by a design agency, and also ...

- Designs which can be directly manufactured.
- More pragmatic solutions, taking into account customer demands in terms of production, logistics, purchasing and marketing.
- Eco-design approach
- thinking, studying combined materials.





E N V I R O N M E N T

“ An environmental strategy based mainly on an eco-design approach ”

Respect for the environment

is at the heart of our solutions

> Our industrial actions

our eco-design approach is based on several commitments:

- well-thought out designs for products that use as little material as possible (software enabling reduction and optimizing of product thicknesses)
- performance of eco-balance impact assessments (3x3 eco-balance)
- optimisation of our manufacturing processes
 - 1> recycling all our waste materials: scraps from thermoforming
 - 2> the increasing use of rPET: the materials coming from recycling plastic bottles.
 - 3> an extruder able to transform directly PET flakes (coming from the recovery and grinding of plastic bottles) into sheets for thermoforming.
- selection of environmentally-friendly materials

> Our daily work

- limiting travel (video-conferences, bicycle deliveries...)
- sorting of waste in-house
- Using recycled paper
- raising of our employees' awareness to energy-saving habits (lights, PCs to be shut down...)
- Etc.



→ 5 tailor-made sectors

Nowadays thermoformed packaging has taken a major place in all consumer and industrial sectors. Its qualities of rigidity, transparency, lightness and strength enables usages which CGL continues to explore for sometimes unexpected applications

F O O D

Wide experience and knowledge of the different food markets enable us to offer innovative and high-quality packaging solutions: inserts, lids, boxes, pots, etc. ...

CGL Pack is committed to a HACCP approach, a guarantee of safety for all major brands in the food sector and it has a technical team with a great knowledge for specific industrial requirements of its customers (sealing, modified atmosphere packaging [MAP], long-term preservation, sterilisation etc).



I N D U S T R Y

Maintenance and protection trays, CGL Pack has answers to your technical problems in stacking, unstacking, automation.



non-food D I S T R I B U T I O N

Need for protection and added value on the shelves ?

CGL Pack knows the distribution system and its channel, enabling it to design and manufacture personalised and innovative packaging solutions.



M E D I C A L / P H A R M A C Y

When dealing with the specific needs of the medical and pharmaceutical sectors in terms of hygiene, technical issues, protection, transportation and complex industrial processes, CGL Pack has the right organization and expertise to make tailored functional and technical packaging: thermoformed trays, blisters etc...



C O S M E T I C S

Through personalized design and due to the multiplicity of shapes, colours and materials, CGL Pack responds perfectly to your marketing and technical requirements for adding value to your cosmetic products in specialist distribution and in supermarkets.





O U R S T A N D A R D S O L U T I O N S

“ There is an existing solution for every application ”

« CGL Pack has developed standard packaging ranges to meet the needs of different markets: »



Optimum Range

> Standard packaging for food products

- **Optimum Range:** an eco-designed range combining cardboard and plastics
- **Iliko Range:** packaging developed specially for caterers
- **"Ready to Package" Range:** a range of sealable food trays in barrier materials to best conserve fresh products.



Iliko Range

> Standard packaging for non-food products

- **Blibool® :** highly original universal displays, enhancing all products, can be personalised with promotional cards or stickers.
- **Blibox® :** more than 80 variations of clamshells available within 48 hours
- **Cube Range:** a range of cubic and transparent boxes to enhance all types of products.



"Ready to pack" food trays range



Blibool® Range



Blibox® Range



Cube Range



“ ideas for your packaging of tomorrow ”

« Each year, the design, marketing and R&D teams of CGL Pack develop 3 to 4 new packaging concepts: they are the expression of our know-how and our ideas, aimed at offering our customers improved and functional solutions with packs providing lower environmental impact: »



• **Conservapack®**
An alternative to cans.



• **Dailybox®**
Thermoformed cup for takeaway.



• **Cellulose**
90% vegetable material.



• **Marmite**
1 lid 100 % watertight.



• **Press'n shake**
Very functional: press and shake without opening the pack



• **Absorpack**
« As efficient as blotting paper »
A box for the retention of exudates thanks to corrugations in the bottom of the box, Absorpack has absorption capacity equal to that of blotting paper.



• **Twin2®**
A combination of plastic and cardbox without any glue (easy recycling) and with a very low environmental impact.



• **Quattro**
« Everyone gets their share »
Several individual boxes are gathered into a single one with a pre-cut closure film ensuring that the boxes remain divisible



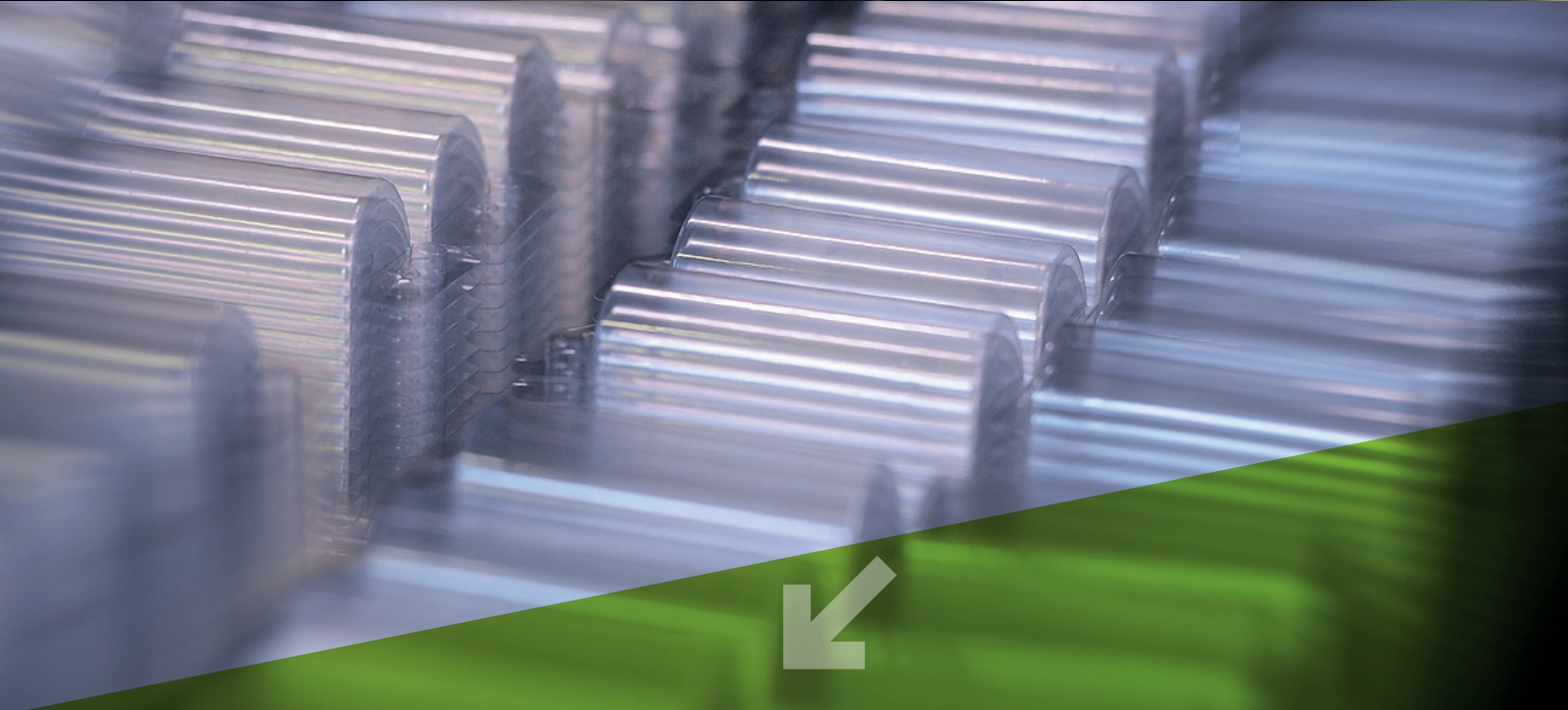
• **Pack Vision**
« En apesanteur »
A low-impact eco-design packaging concept with an enhanced and ingenious design which makes the product "weightless" in a closure acting as a window.



• **Clipseal®**
« measured appetite »
A closable pack without lid: the cover can be re-positioned easily with a thermoformed system which keeps the film well stretched.



• **Polywood**
A new material combining a bio-sourced product (wood) and conventional polymers (PP) which retains the same technical advantages as the plastics which are 100% fossil origin.



Find us on www.cglpack.com

Sales information
Tél. +33(0)4 50 27 34 50
Fax. +33(0)4 50 27 34 47
cgl@cglpack.com

Our industrial sites

CGL Pack Annecy
BP 9020
74990 Annecy Cedex 9
Tél. +33(0)4 50 27 34 50
Fax. +33(0)4 50 27 34 47
annecy@cglpack.com

CGL Pack Lorient
450 rue d'Arvor
56530 Gestel
Tél. +33(0)2 97 80 12 80
Fax. +33(0)2 97 05 23 16
lorient@cglpack.com

